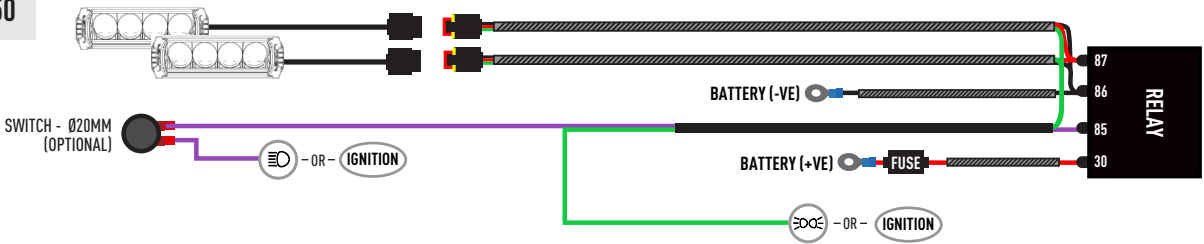
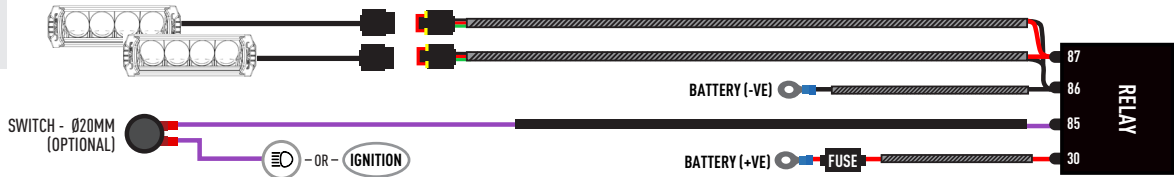


ELECTRICAL CONNECTION

TRIPLE-R 750



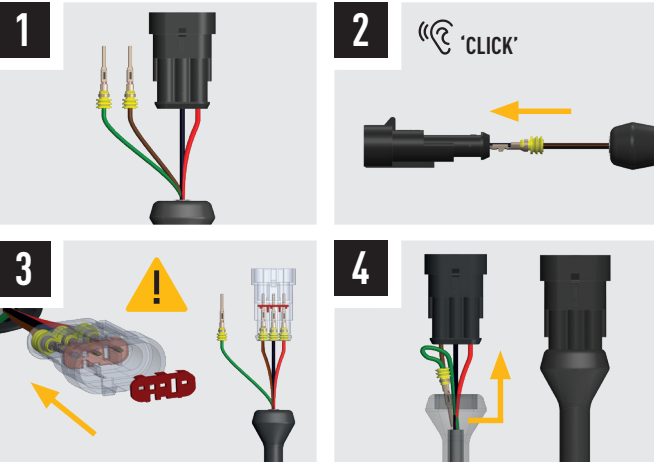
TRIPLE-R 750 ELITE / WIDE



TRIPLE-R 750 BEACON

Please refer to the instructions included with the lamps.

LAMP CONNECTOR INFORMATION



E9

UNECE REGULATIONS

Please scan the QR code to view all UNECE Certificates and information.



LAZER  
HIGH PERFORMANCE LIGHTING

BYD SHARK (2024+)  
GRILLE KIT

FITTING INSTRUCTIONS



LAZER  
HIGH PERFORMANCE LIGHTING  
[WWW.LAZERLAMPS.COM](http://WWW.LAZERLAMPS.COM)

We appreciate your purchase of a Lazer Lamps product, and value your feedback. If you would like to leave feedback on your Lazer experience, please head to the relevant product page on our website [www.lazerlamps.com](http://www.lazerlamps.com).

T +44 (0) 1992 677374  
E [sales@lazerlamps.com](mailto:sales@lazerlamps.com)

Lazer Lamps Ltd, Calder House, Central Road  
Harlow, Essex, CM20 2ST, UK

MADE IN THE UK /LAZERLAMPS



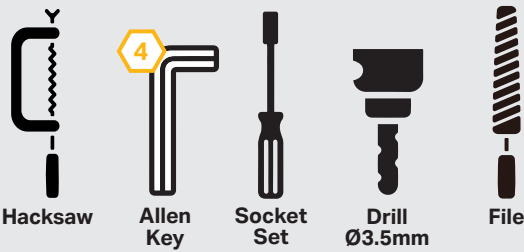
WHAT'S INCLUDED

- 4x Grille Mounting Brackets
- 4x Cutting Guides
- Anti-Theft Fasteners & Key
- Fitting Instructions

Additionally - Kit Includes:

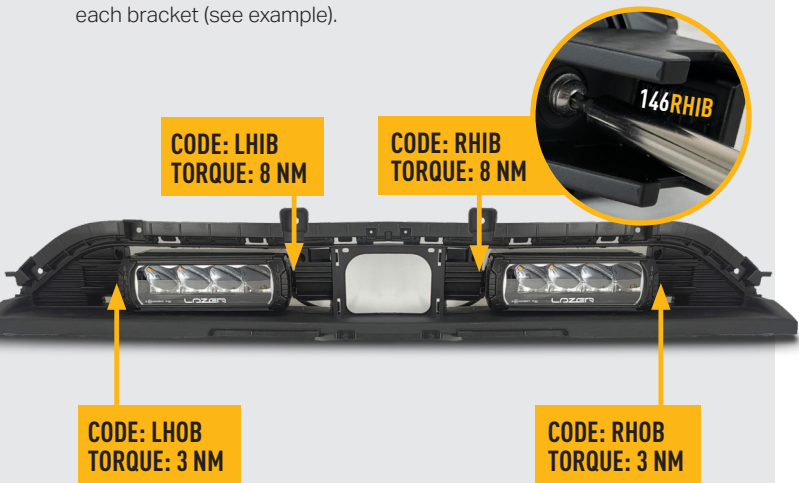
- 2x Triple-R 750 LED Lights
- 1x Two-Lamp Wiring Kit

TOOLS REQUIRED



TORQUE VALUES

The code is written on the inside of each bracket (see example).



INSTALLATION PROCESS - Install should be completed with the grille left on the vehicle.

